



# Á G U A S

a concept by Diego Vencato

*[everchanging surfaces]*

Materials.	Glazed porcelain rectified White body double-firing
Sizes.	90x90 - 45x90 26,3x27,1 - 28,3x30
Colours.	Natural White, Clay, Graphite, Terracotta
Accessories.	Items Available
Application.	Inside - Outside / Floor - Wall



SETTECENTOSTUDIO



# Á G U A S

a concept by Diego Vencato



SETTECENTOSTUDIO



## ÁGUAS

*a concept by Diego Vencato*

IT

“Ascoltando la canzone “Águas de Março” (Elis Regina e Tom Jobim) che parla delle piogge d’autunno, ho pensato a come cambiano le superfici dei materiali sotto la pioggia: il terreno si deforma con il picchiettio delle gocce d’acqua e cambia la sua texture; ciò che prima era opaco, lentamente diventa lucido e riflettente.

In modo particolare, proprio quando inizia a piovere, le prime gocce d’acqua disegnano un pattern grafico molto bello, destinato però a durare pochi secondi. Ho voluto raccontare tutto questo in una collezione che unisce una superficie tridimensionale materica e opaca ad una texture di gocce d’acqua lucide e brillanti.”

EN

“Listening to the song “Águas de Março” (Elis Regina and Tom Jobim) I thought about how surfaces can change in the rain. The ground slowly receives the raindrops and changes its texture; what was previously matt becomes shiny and reflective. In particular, just when it starts to rain, the first drops of water draw a very beautiful graphic pattern, destined, however, to last only a few seconds.

*I wanted to tell all of this in a collection that combines a three-dimensional surface with a bright texture of matt and shiny drops.”*



## DIEGO VENCATO

IT

Diego Vencato si laurea al Politecnico di Milano e collabora con Clino Trini Castelli, con Artemide e con lo studio Parisotto+Formenton Architetti. Progetta per aziende come Horm, Segno, Mobileffe, Rapsel, r&dlab - Michele Ruffin Creative Group, Eurochocolate, Dainese, MDF Italia, Albeflex, Samsung, Yonder, Pi.Mar, Nodus Rug, Agape, iGuzzini, Elmar.

I suoi lavori sono stati pubblicati sia sul web sia su numerose riviste internazionali tra cui Interni, Abitare, Elle Decor, AD e Wallpaper. Nel 2007 e nel 2010 vince il 1° premio al concorso Young&Design. Nel 2011 il mobile contenitore “A/R” (Horm) viene selezionato per il XXII premio Compasso d’Oro ADI. Nel 2020 vince lo Stylepark Award con la collezione “Petra” (Agape) e gli Archiproducts Design Awards 2020 con la cucina “Libera” (Elmar).

EN

Diego Vencato graduated from the Politecnico di Milano and cooperated with Clino Trini Castelli, Artemide, and Parisotto+Formenton Architetti studio. He works as a designer for Horm, Segno, Mobileffe, Rapsel, r&dlab Michele Ruffin Creative Group, Eurochocolate, Dainese, MDF Italia, Albeflex, Samsung, Yonder, Pi.Mar, Nodus Rug, Agape, iGuzzini, Elmar.

*His works have been published both on the web and in several international magazines such as Interni, Abitare, Elle Decor, AD and Wallpaper. 1st prize at Young&Design award in 2007 and 2010 edition. “A/R” cupboard (Horm) selected for the XXII Compasso d’Oro ADI award in 2011. Stylepark Award in 2020 with “Petra” collection (Agape). Archiproducts Design Awards 2020 with the “Libera” kitchen (Elmar).*

*"Águas è un sistema  
che recupera processi  
artigianali partendo dalla  
soluzione industriale."*

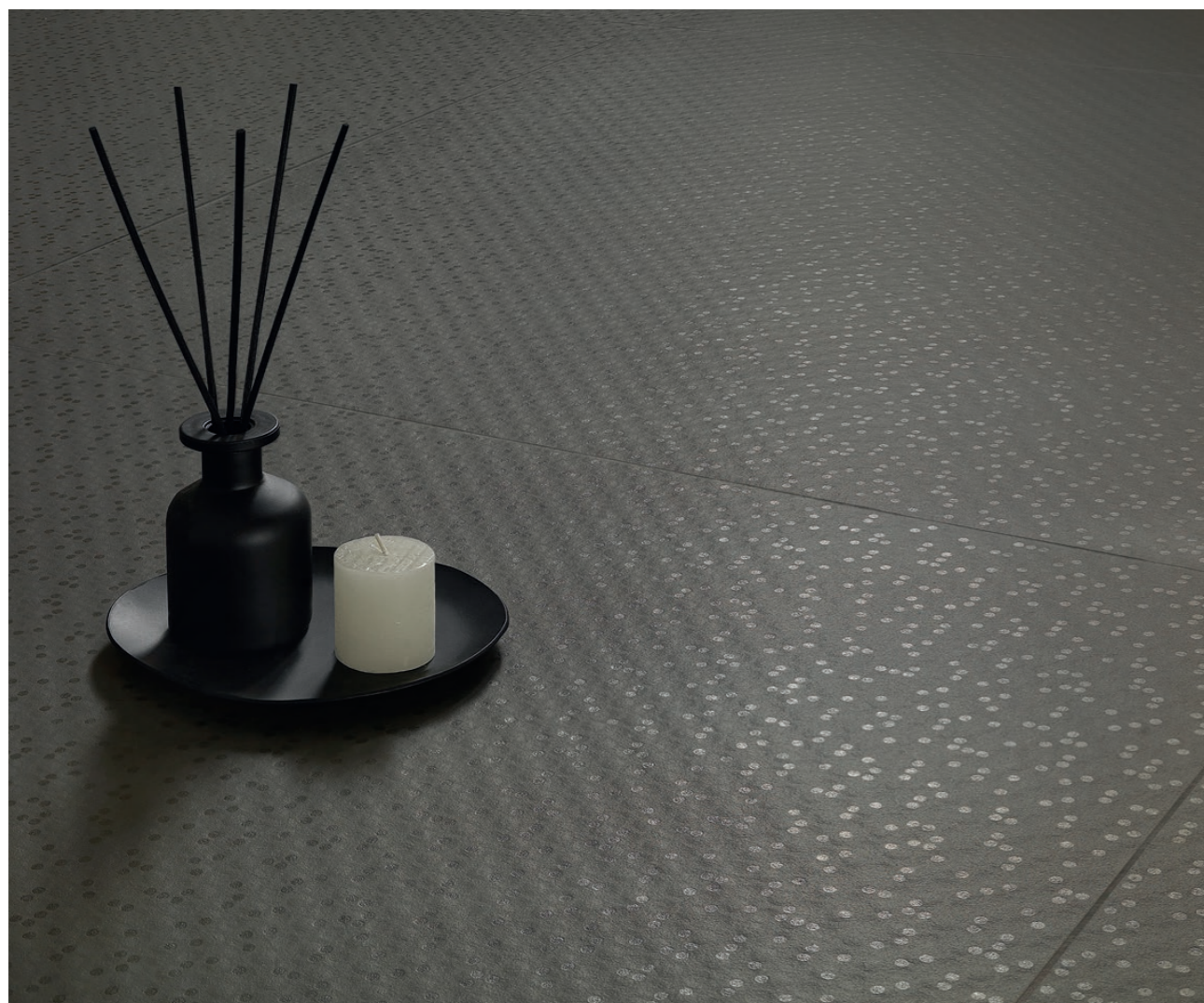
*"Águas is a system that  
revives traditional  
craftsmanship within  
an industrial framework."*

Diego Vencato



Wall / **Dots Natural White** · su rete 26,3x27,1  
**Pipe Terracotta** · su rete 28,3x30

Floor / **Plain Terracotta** · 90x90



*"Ho cercato di fermare  
il momento delle prime  
gocce d'acqua sul  
terreno."*

*"I tried to capture  
the moment of the first  
raindrops hitting  
the ground."*

*Diego Vencato*





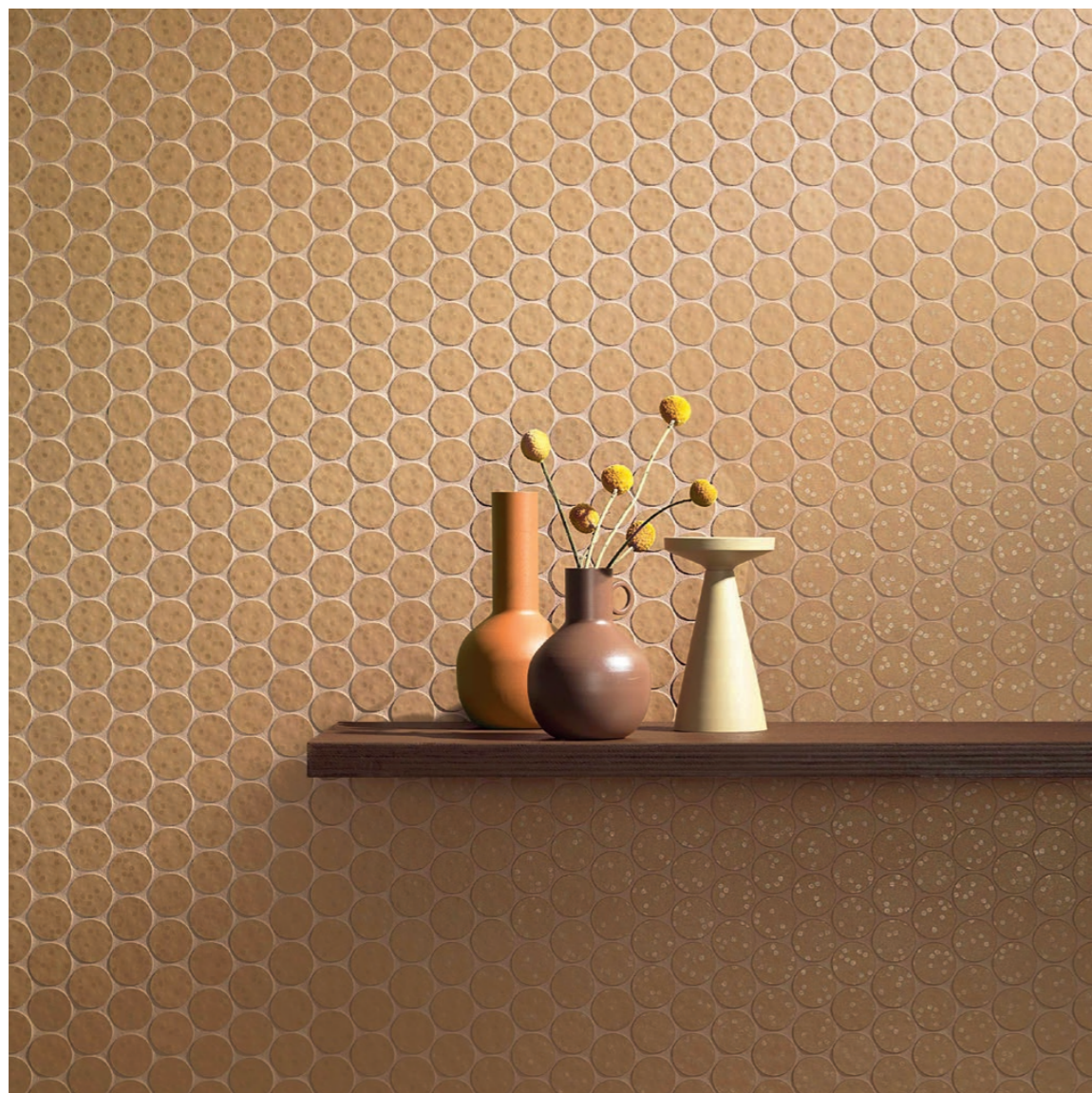
Wall / **Plain Clay** · 45x90  
**Terminale Clay** · 2x28,3  
**Pipe Clay** · su rete 28,3x30

Floor / **Plain Clay** · 90x90





Wall / **Terminale Natural White** · 2x28,3  
**Pipe Natural White** · su rete 28,3x30



Wall / Dots Terracotta · su rete 26,3x27,1

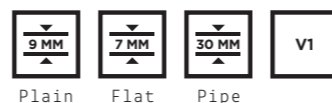


Wall / Dots Graphite · su rete 26,3x27,1

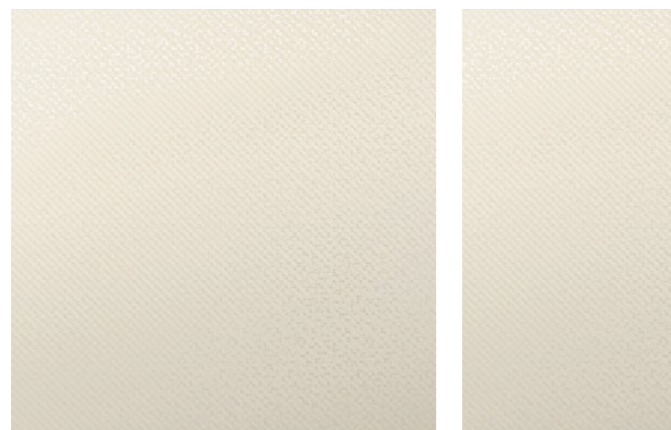


# ÁGUAS

a concept by Diego Vencato



## PLAIN · NATURAL WHITE



53 118400 Plain  
Natural White  
90x90

53 118410 Plain  
Natural White  
45x90

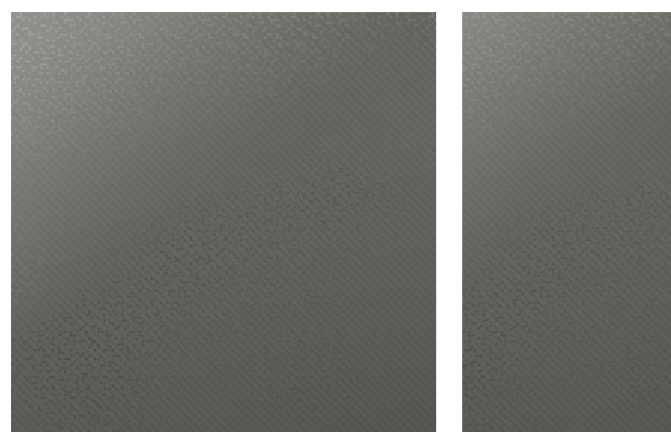
## PLAIN · CLAY



53 118401 Plain  
Clay 90x90

53 118411 Plain  
Clay 45x90

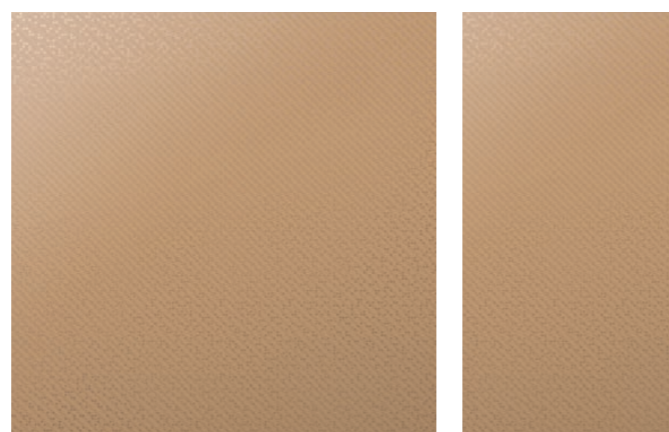
## PLAIN · GRAPHITE



53 118402 Plain  
Graphite 90x90

53 118412 Plain  
Graphite 45x90

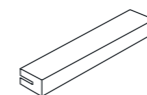
## PLAIN · TERRACOTTA



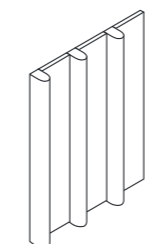
53 118403 Plain  
Terracotta 90x90

53 118413 Plain  
Terracotta  
45x90

## PIPE



34 Terminale 2x28,3  
11849- Natural White  
11850- Clay  
11851- Graphite  
11852- Terracotta

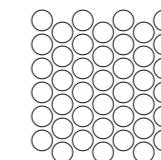


93 Pipe su rete 28,3x30  
118414 Natural White  
118415 Clay  
118416 Graphite  
118417 Terracotta

24 Pipe 1,6x30  
118434 Natural White  
118435 Clay  
118436 Graphite  
118437 Terracotta

97 Flat 7,5x30  
118430 Natural White  
118431 Clay  
118432 Graphite  
118433 Terracotta

## DOTS



93 Dots 42mm Ø  
su rete 26,3x27,1  
118420 Natural White  
118421 Clay  
118422 Graphite  
118423 Terracotta

## PEZZI SPECIALI

Special pieces / Pièces spéciales / Sonderstücke / Специальные изделия



70 Battiscopa 6,1x90  
11845- Natural White  
11846- Clay  
11847- Graphite  
11848- Terracotta



80 Elemento a L 30x90x5  
11853- Natural White  
11854- Clay  
11855- Graphite  
11856- Terracotta

## Colori consigliati per la stuccatura

Recommended grout colours / Couleurs recommandées pour les joints  
Empfohlene Farben für das Verfugen / Рекомендуемые цвета для затирки

**Natural White**  
(Plain, Dots, Pipe, Terminale)  
NCS S 0502-Y

**Clay**  
(Plain, Dots, Pipe, Terminale)  
NCS S 2502-Y

**Graphite**  
(Plain, Dots, Pipe, Terminale)  
NCS S 6502-Y

**Terracotta**  
(Plain, Dots, Pipe, Terminale)  
NCS S 2020-Y40R

## CARATTERISTICHE TECNICHE

Technical features / Caracteristiques techniques / Technische Eigenschaften / Технические характеристики

	Metodo di prova Testing method Teste d'essai Pruefmethode Методика испытаний	Valore Value Valeur Wert Величина	Valore Value Valeur Wert Величина
		GLAZED PORCELAIN (Plain - Dots) UNI EN ISO 14411 BIa A. G GL	WHITE BODY DOUBLE-FIRING (Pipe - Terminale) UNI EN ISO 14411 BIII A. L GL
Assorbimento acqua Water absorption Absorption d'eau Wasseraufnahme Водопоглощение	ISO 10545.3	< 0,5 %	> 10 %
Resistenza alla flessione Bending strength Résistance à la flexion Biegezugfestigkeit Стойкость к изгибу	ISO 10545.4	Conforme	> 17 N/mmq
Resistenza all'attacco chimico Chemical resistance Résistance à l'attaque chimique Beständigkeit gegen Chemikalien Стойкость к химическому воздействию	ISO 10545.13	A	A
Resistenza alle macchie Stain resistance Résistance aux taches Fleckenbeständigkeit Стойкость к образованию пятен	ISO 10545.14	5	5
Anti scivolosità Anti-slip index Coéfficient anti-dérapage Trittsicherheitskoeffizient Характеристики устойчивости к скольжению	DIN 51130 DIN 51097 ANSI A 137.1:2012	R10 A >0,42 wet	N. D.
Resistenza all'abrasione Resistance to abrasion Résistance à l'abrasion Abriebhärte Стойкость к истиранию	ISO 10545.7	PEI V (Natural White, Clay) PEI IV (Graphite, Terracotta)	N.D.
Determinazione della resistenza al gelo Frost resistance index Coefficient de résistance au gel Feststellung der Frostbeständigkeit Определение морозостойкости	ISO 10545.12	Ingelivo Frost proof Ingelif Frostsisicher Морозостойкая	N.D.

## IMBALLI

Packaging / Emballages / Verpackungen / Упаковка

	Mq/Box	Pcs/Box	Kg/Box	Mq/Pallet	Box/Pallet	Kg/Pallet
Plain 90x90 - 36"x36"	1,620	2	32,40	32,40	20	648,00
Plain 45x90 - 18"x36"	1,210	3	24,20	38,72	32	774,40
Dots 42mm su rete 26,3x27,1 - 1.5" on 12"x12" mesh	0,500	7	9,10	16,00	32	291,20
Pipe su rete 28,3x30 - 12"x12" mesh	0,510	6	10,20	16,32	32	326,40
Flat 7,5x30 - 3"x12"	0,585	26	7,80	42,12	72	561,60
Terminale 2x28,3 - 1"x12"		10	3,40			
Pipe 1,6x30 - 0.5"x12"		6	1,60			
Battiscopa 6,1x90 - 2"x36"	6,300ml	7	7,70			
Elemento a L 30x90x5 - 12"x36"x2"		1	6,30			

## CREDITS

Portrait photo (page 3): Laura Chiarotto

# SETTECENTOSTUDIO

Ceramiche Settecento Valtresinaro S.p.A.

Via del Crociale, 21 - 41042 Fiorano Modenese (MO)

Tel. +39 0536 928711 - Fax +39 0536 928718

www.settecento.com - e-mail: info@settecento.com

